

**PRELIMINARY CONCEPT SITE PLAN**

**COMBINED COUNTY OFFICES/COURTS/  
JAIL - JUSTICE CENTER**

**PONCA - ADJACENT TO COUNTY ANNEX BUILDING**



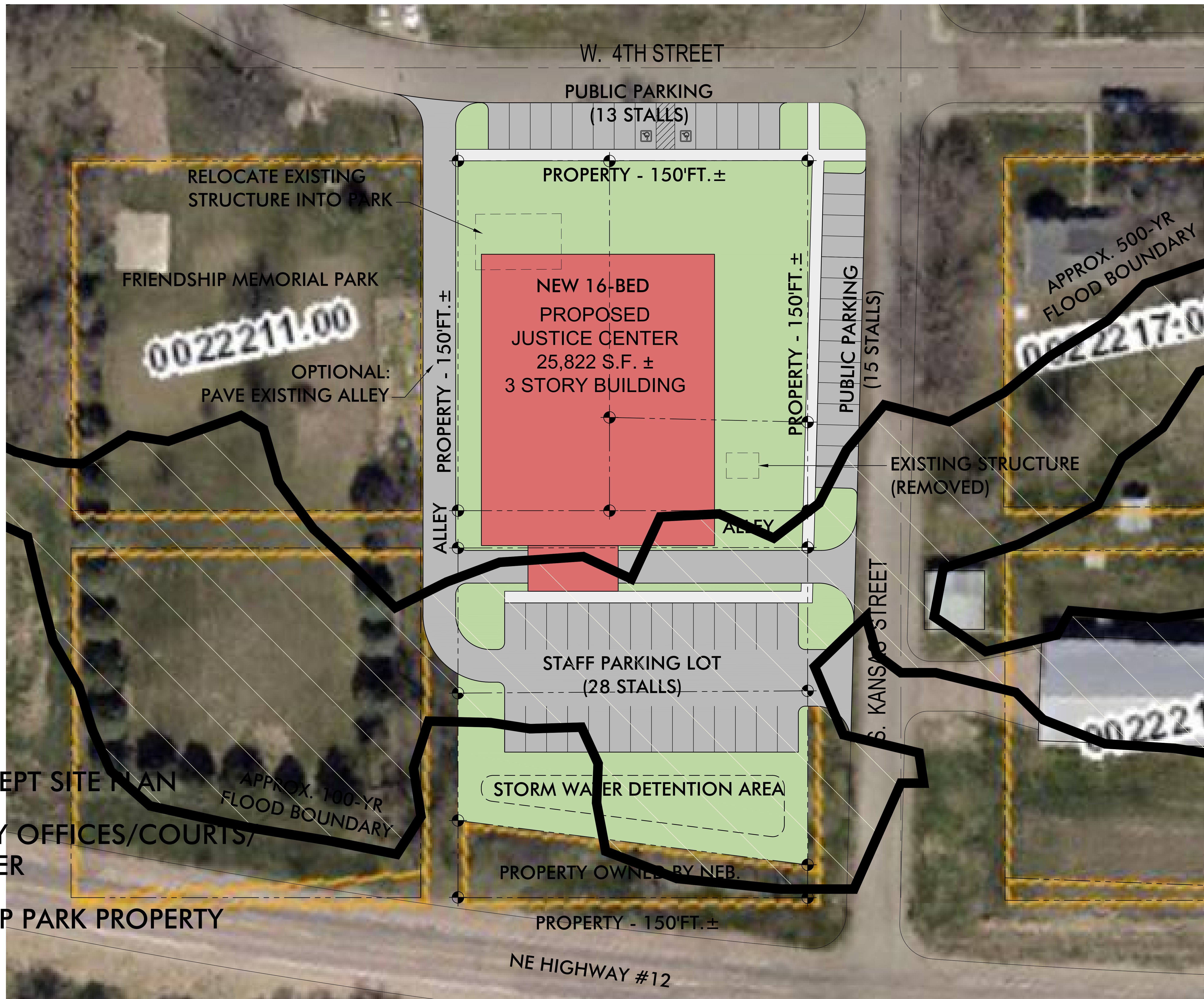
**DIXON COUNTY OFFICES**  
**P O N C A, N E B R A S K A**



**OPTION 1**  
**SITE PLAN**

REPRODUCTION - THIS DOCUMENT AND THE INFORMATION CONTAINED HEREIN MAY NOT BE REPRODUCED OR EXCERPTED FROM WITHOUT THE EXPRESS WRITTEN PERMISSION OF PROCHASKA & ASSOCIATES. UNAUTHORIZED COPYING, DISCLOSURE, OR CONSTRUCTION USE ARE PROHIBITED BY COPYRIGHT LAW. © COPYRIGHT 2022 PROCHASKA & ASSOCIATES, INC.





PRELIMINARY CONCEPT SITE PLAN  
 COMBINED COUNTY OFFICES/COURTS/  
 JAIL - JUSTICE CENTER  
 PONCA - FRIENDSHIP PARK PROPERTY



# DIXON COUNTY OFFICES

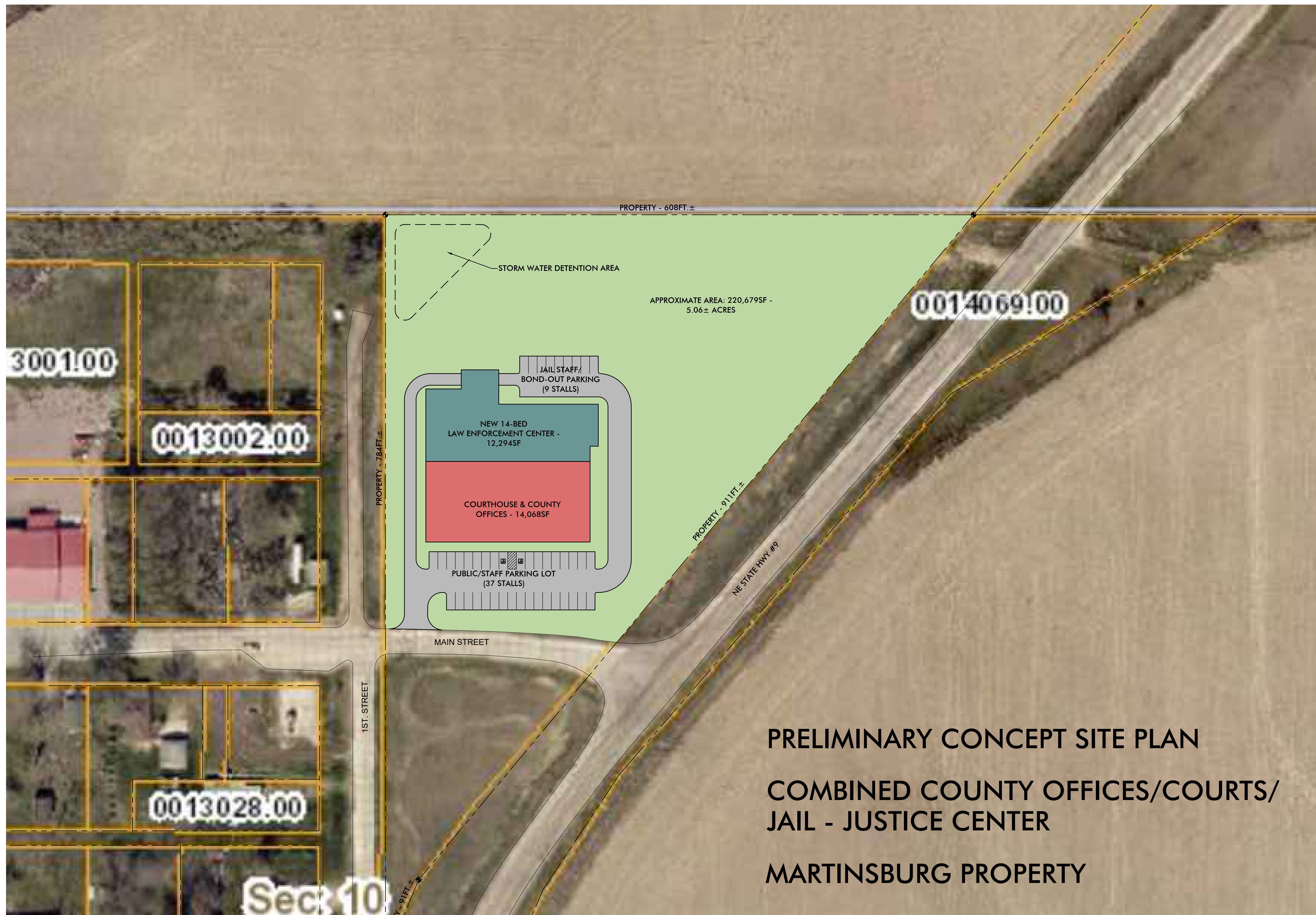
P O N C A, N E B R A S K A



OPTION **2**  
 SITE PLAN

REPRODUCTION - THIS DOCUMENT AND THE INFORMATION CONTAINED HEREIN MAY NOT BE REPRODUCED OR EXCERPTED FROM WITHOUT THE EXPRESS WRITTEN PERMISSION OF PROCHASKA & ASSOCIATES. UNAUTHORIZED COPYING, DISCLOSURE, OR CONSTRUCTION USE ARE PROHIBITED BY COPYRIGHT LAW. © COPYRIGHT 2022 PROCHASKA & ASSOCIATES, INC.





PRELIMINARY CONCEPT SITE PLAN  
 COMBINED COUNTY OFFICES/COURTS/  
 JAIL - JUSTICE CENTER  
 MARTINSBURG PROPERTY



OPTION **3**  
 SITE PLAN



# DIXON COUNTY OFFICES

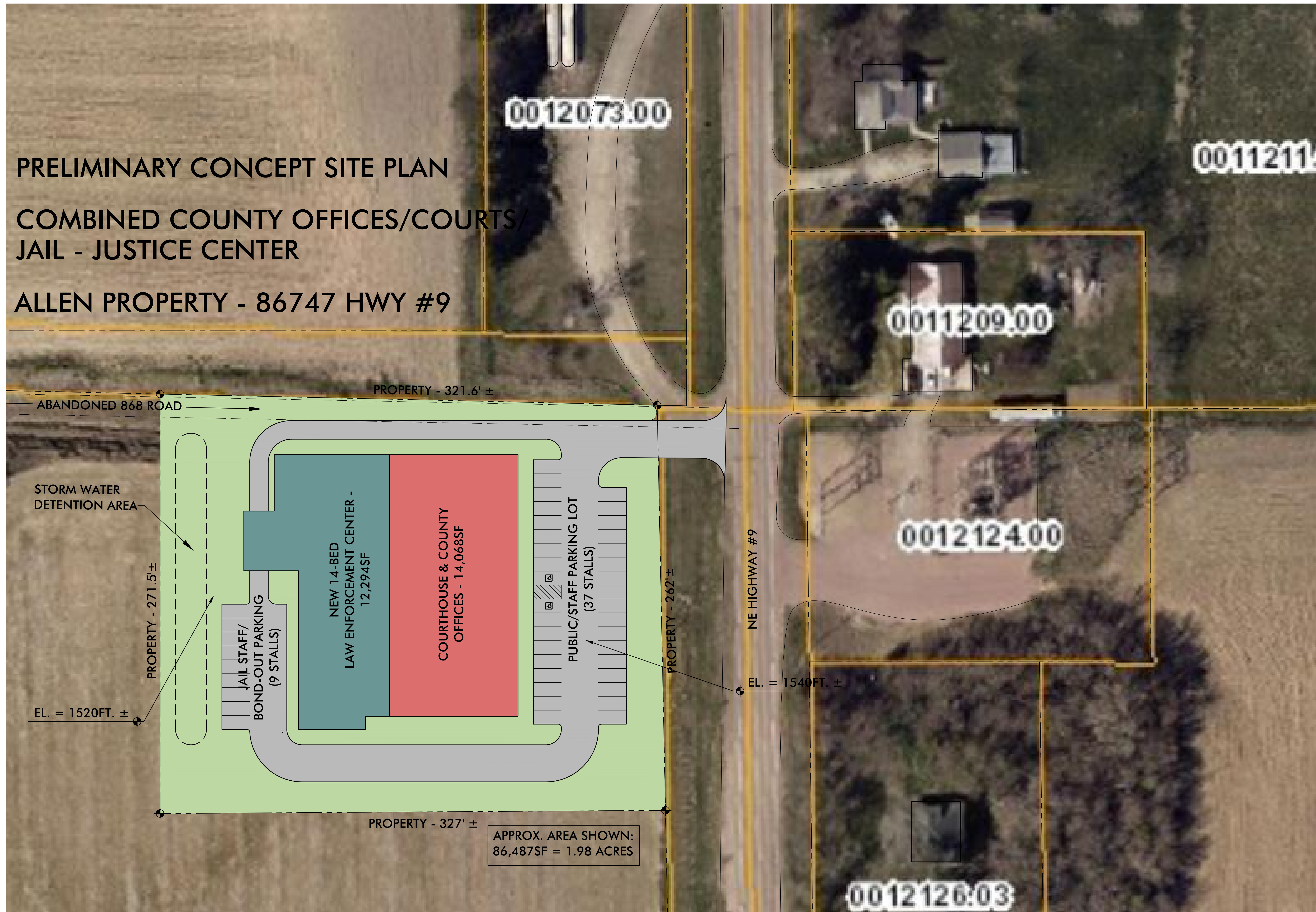
P O N C A, N E B R A S K A

REPRODUCTION - THIS DOCUMENT AND THE INFORMATION CONTAINED HEREIN MAY NOT BE REPRODUCED OR EXCERPTED FROM WITHOUT THE EXPRESS WRITTEN PERMISSION OF PROCHASKA & ASSOCIATES. UNAUTHORIZED COPYING, DISCLOSURE, OR CONSTRUCTION USE ARE PROHIBITED BY COPYRIGHT LAW. © COPYRIGHT 2022 PROCHASKA & ASSOCIATES, INC.



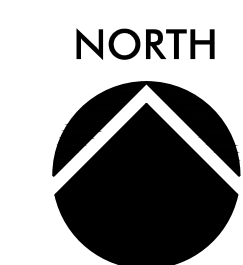
PRELIMINARY CONCEPT SITE PLAN  
 COMBINED COUNTY OFFICES/COURTS/  
 JAIL - JUSTICE CENTER

ALLEN PROPERTY - 86747 HWY #9



# DIXON COUNTY OFFICES

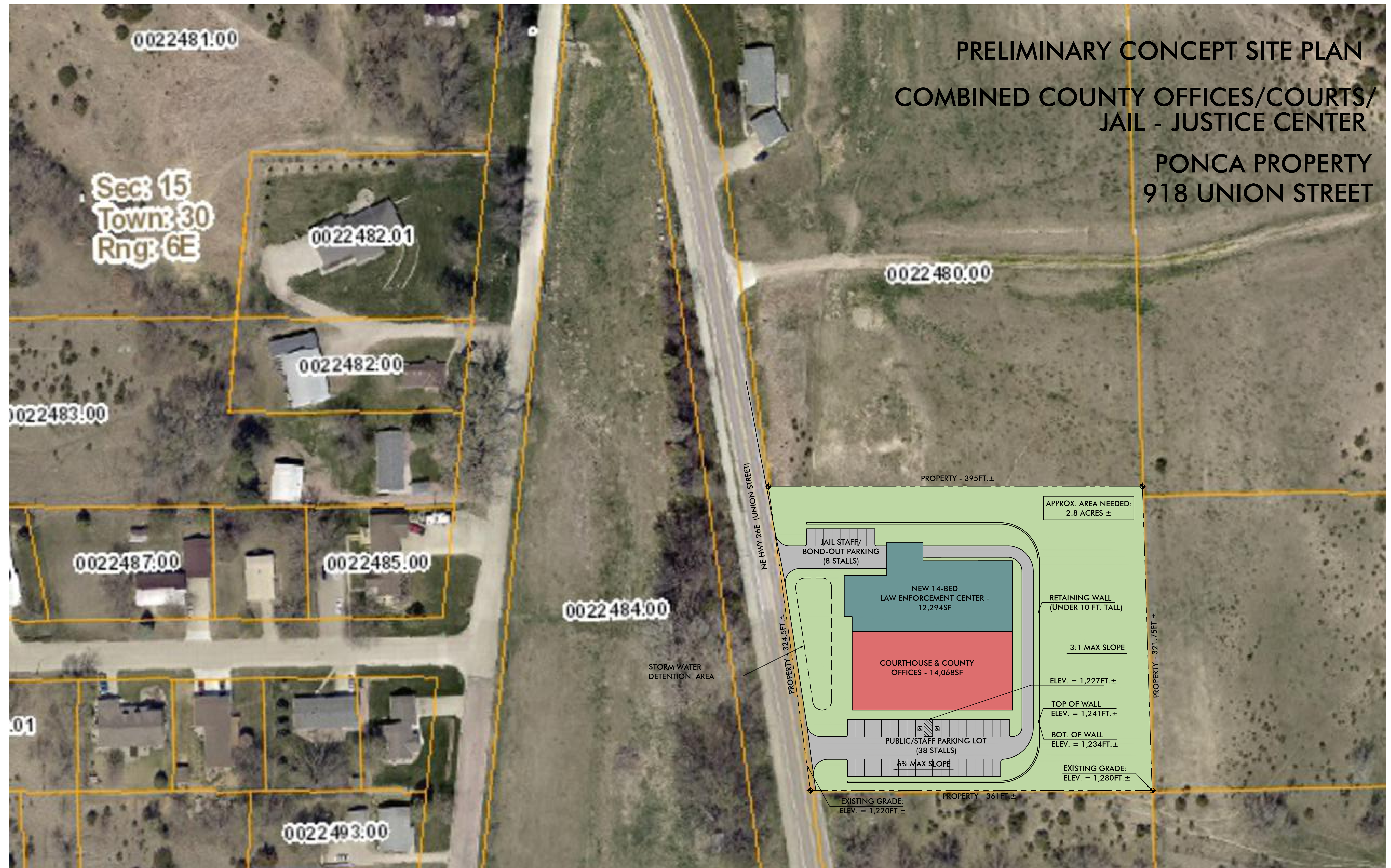
P O N C A, N E B R A S K A



OPTION **4**  
 SITE PLAN

REPRODUCTION - THIS DOCUMENT AND THE INFORMATION CONTAINED HEREIN MAY NOT BE REPRODUCED OR EXCERPTED FROM WITHOUT THE EXPRESS WRITTEN PERMISSION OF PROCHASKA & ASSOCIATES. UNAUTHORIZED COPYING, DISCLOSURE, OR CONSTRUCTION USE ARE PROHIBITED BY COPYRIGHT LAW. © COPYRIGHT 2022 PROCHASKA & ASSOCIATES, INC.





# DIXON COUNTY OFFICES

## P O N C A, N E B R A S K A

NORTH

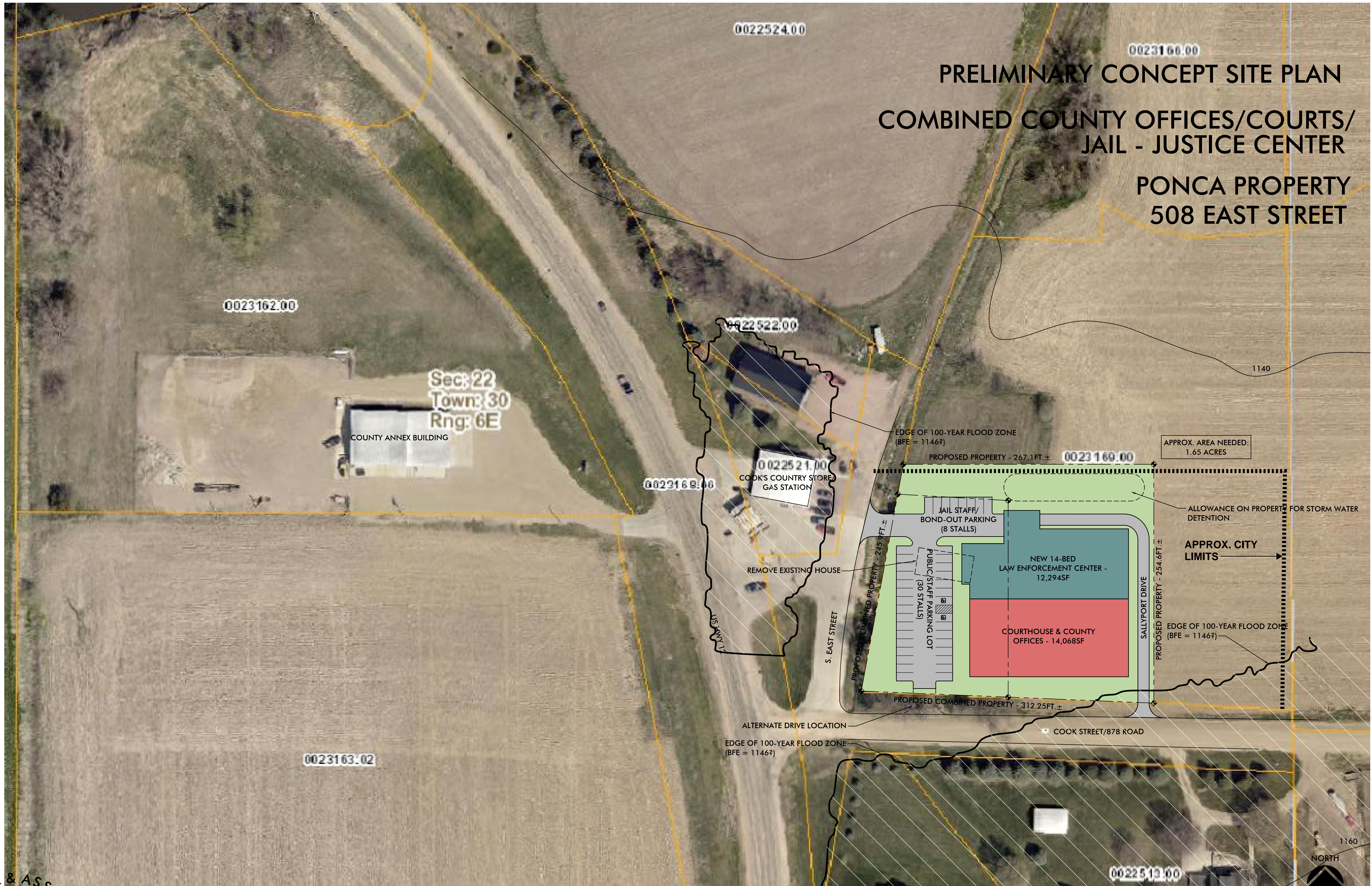
OPTION **5** SITE PLAN

REPRODUCTION - THIS DOCUMENT AND THE INFORMATION CONTAINED HEREIN MAY NOT BE REPRODUCED OR EXCERPTED FROM WITHOUT THE EXPRESS WRITTEN PERMISSION OF PROCHASKA & ASSOCIATES. UNAUTHORIZED COPYING, DISCLOSURE, OR CONSTRUCTION USE ARE PROHIBITED BY COPYRIGHT LAW. © COPYRIGHT 2022 PROCHASKA & ASSOCIATES, INC.

11/29/2022  
 SCALE: 1" = 40'-0"



**PRELIMINARY CONCEPT SITE PLAN**  
**COMBINED COUNTY OFFICES/COURTS/  
 JAIL - JUSTICE CENTER**  
**PONCA PROPERTY**  
**508 EAST STREET**



**DIXON COUNTY OFFICES**  
**P O N C A, N E B R A S K A**

**OPTION 6a**  
**SITE PLAN**

REPRODUCTION - THIS DOCUMENT AND THE INFORMATION CONTAINED HEREIN MAY NOT BE REPRODUCED OR EXCERPTED FROM WITHOUT THE EXPRESS WRITTEN PERMISSION OF PROCHASKA & ASSOCIATES. UNAUTHORIZED COPYING, DISCLOSURE OR CONSTRUCTION USE ARE PROHIBITED BY COPYRIGHT LAW. © COPYRIGHT 2022 PROCHASKA & ASSOCIATES, INC.



**PRELIMINARY CONCEPT SITE PLAN**  
**COMBINED COUNTY OFFICES/COURTS/  
 JAIL - JUSTICE CENTER**  
**PONCA PROPERTY**  
**COOK STREET**

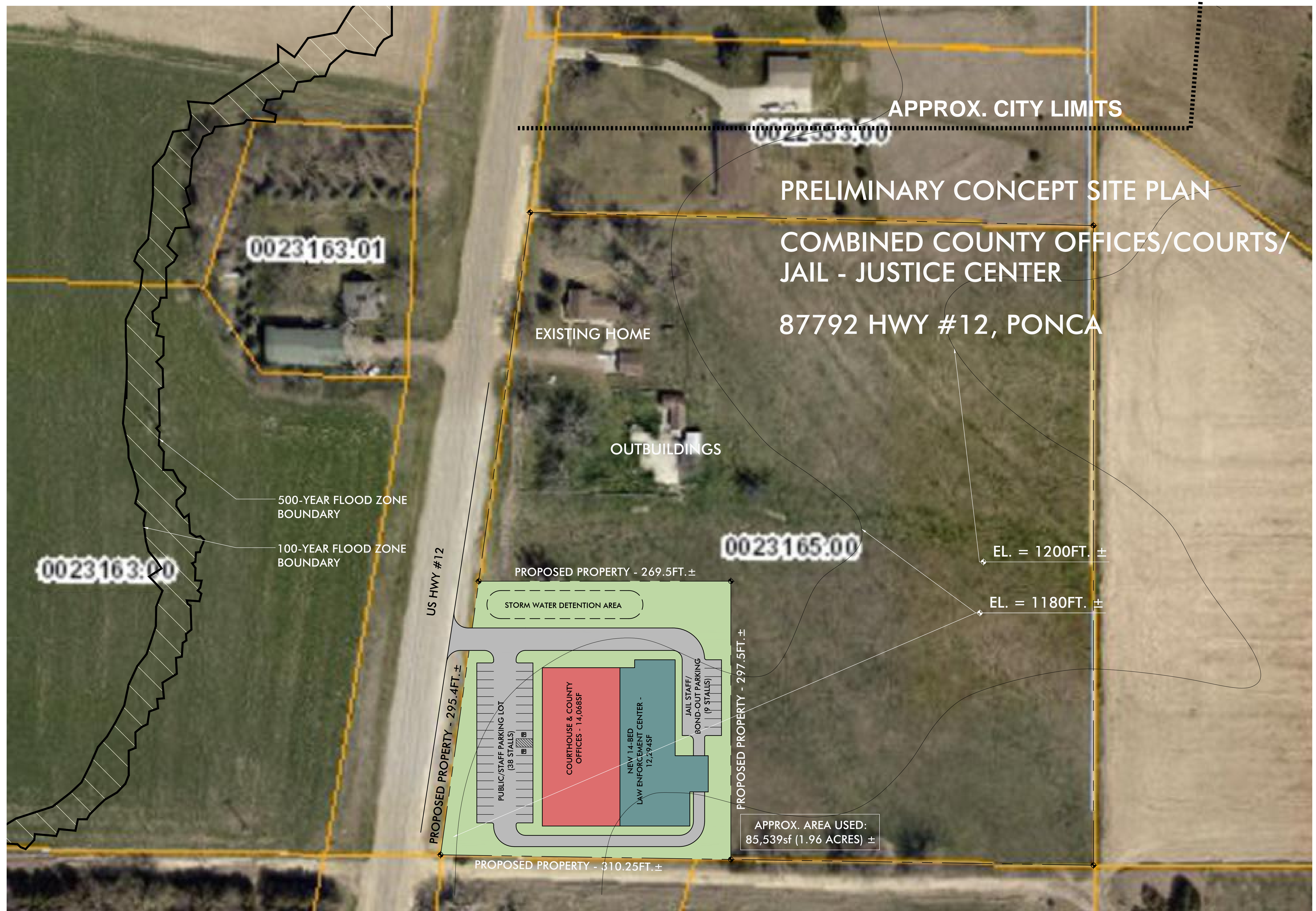


**DIXON COUNTY OFFICES**  
**P O N C A, N E B R A S K A**

**OPTION 6b**  
 SITE PLAN

REPRODUCTION - THIS DOCUMENT AND THE INFORMATION CONTAINED HEREIN MAY NOT BE REPRODUCED OR EXCERPTED FROM WITHOUT THE EXPRESS WRITTEN PERMISSION OF PROCHASKA & ASSOCIATES. UNAUTHORIZED COPYING, DISCLOSURE, OR CONSTRUCTION USE ARE PROHIBITED BY COPYRIGHT LAW. © COPYRIGHT 2022 PROCHASKA & ASSOCIATES, INC.





# DIXON COUNTY OFFICES

P O N C A, N E B R A S K A

OPTION **7**  
SITE PLAN

REPRODUCTION - THIS DOCUMENT AND THE INFORMATION CONTAINED HEREIN MAY NOT BE REPRODUCED OR EXCERPTED FROM WITHOUT THE EXPRESS WRITTEN PERMISSION OF PROCHASKA & ASSOCIATES. UNAUTHORIZED COPYING, DISCLOSURE OR CONSTRUCTION USE ARE PROHIBITED BY COPYRIGHT LAW. © COPYRIGHT 2022 PROCHASKA & ASSOCIATES, INC.